

DDS238-4 (E) single phase din rail type watt hour meter (D1411)



The meter is designed to measure single phase two wire AC active energy like residential, utility and industrial application. It is a long life meter with the advantage of high stability, high over load capability, low power loss and small volume.

Basic Function

- ★LCD display 6+1(default), or 5+2
- ★Bi-directional total active energy measurement, reverse active energy measure in the total active energy
- ★ Pulse LED indicates working of meter, Passive pulse output with optical coupling isolation
- ★Energy data can store in memory chip more than 15 years after power off
- ★35mm din rail installation

Optional Function

- ★The meter can measure and LCD display the total forward/reverse active energy
- ★Power on LED indication

Noting : other voltage , current are also available . Other function also can be special design as customer requirement

DDS238-4 (E) single phase din rail type watt hour meter (D1411)

Technical Data

Rate voltage	110V,120V,220V,230,240V
Working voltage range	0.8~1.2Un
Rate Current	5(60)A, 10(100)A, or other as required
Frequency	50Hz or 60Hz±10%
Connection mode	Direct type
Display	LCD
Accuracy class	1.0
Power consumption	<1W/10VA
Start current	0.004Ib
AC voltage withstand	4000V/25mA for 60 sec
Impulse Voltage	6kV 1.2μs waveform
Over current withstand	30Imax for 0.01s
IP grade	IP51
Constant	800~3200 imp/kWh
Pulse output	Passive pulse, pulse width is 80±5 ms
Executive standard	DIN 43880, IEC62053-21, IEC62052-11
Outline dimension LXMxH	102x82x65mm
Weight	Approx 0.3kg

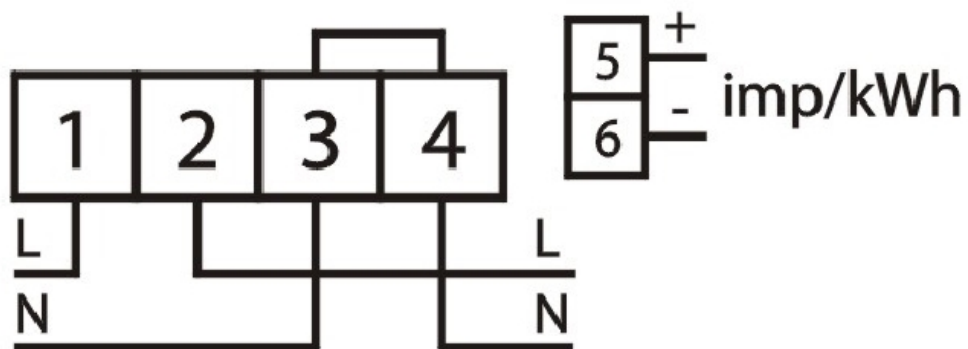
Environment

Operating temperature	-25℃~55℃
Storage temperature	-40℃~80℃
Reference temperature	23℃±2℃
Relative humidity	0 to 95%, non-condensing
Altitude	Up to 2500m
Warm up time	10s
Mechanical Environment	M1
Electromagnetic Environment	E2
Degree of pollution	2

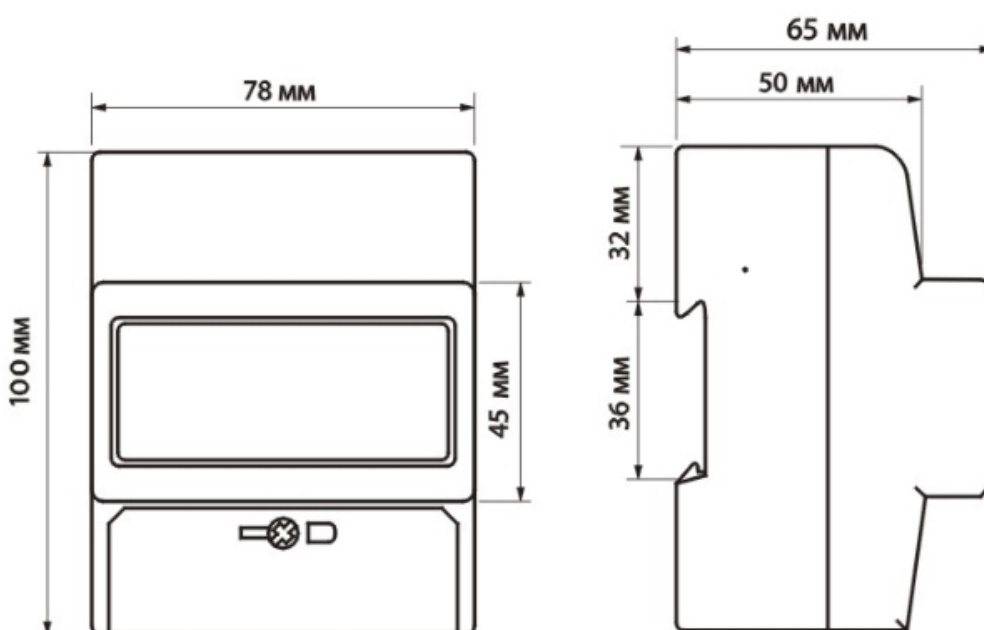
Wire connection

Noting : other voltage , current are also available . Other function also can be special design as customer requirement

DDS238-4 (E) single phase din rail type watt hour meter (D1411)



Outline dimension



Noting : other voltage , current are also available . Other function also can be special design as customer requirement